



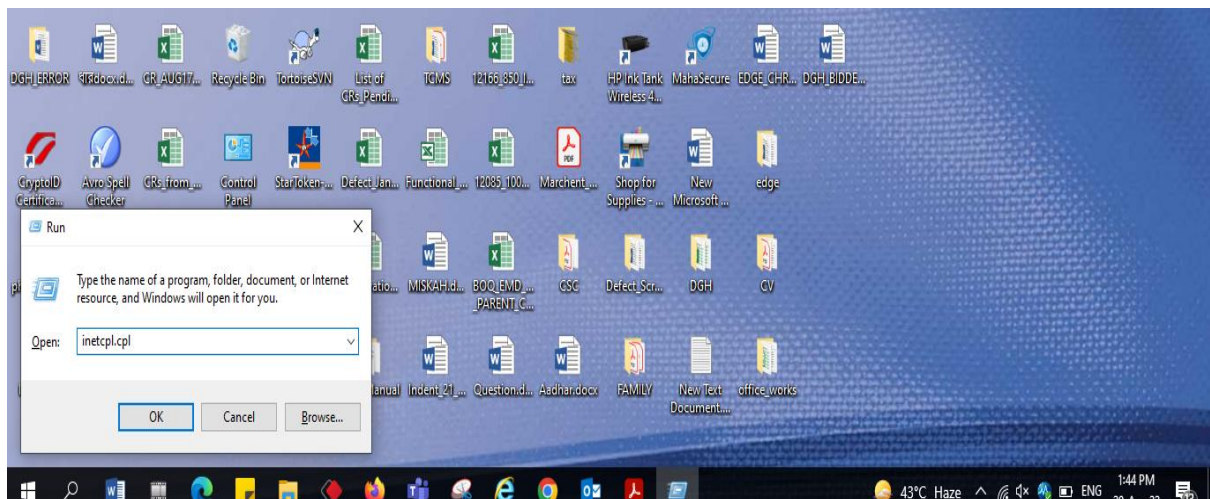
EDGE browser setting

This document is prepared to configure the proper setting of EDGE browser for smooth operation

Step:1

Open Internet Property by following :

Go to start menu>click Windows+Run>enter the command **inetctl.cpl** and click Ok

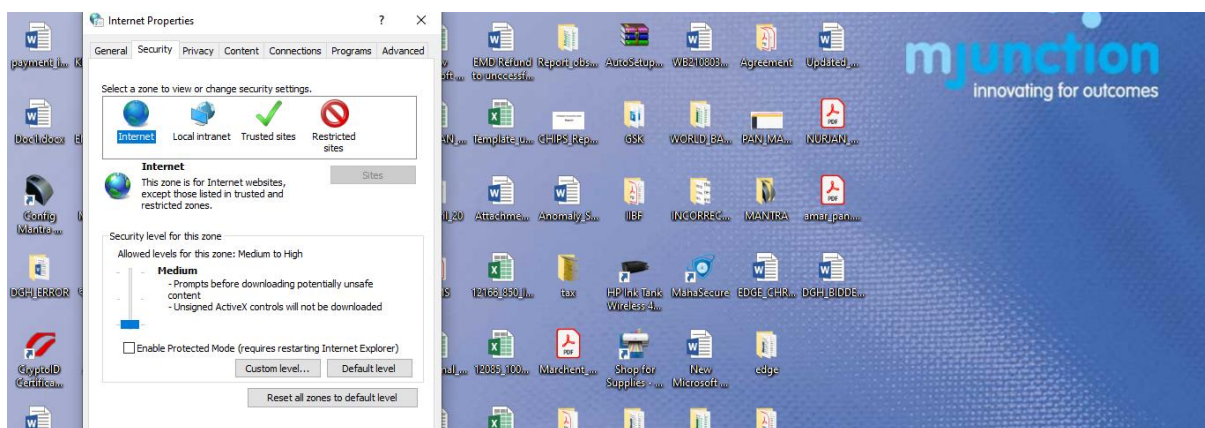
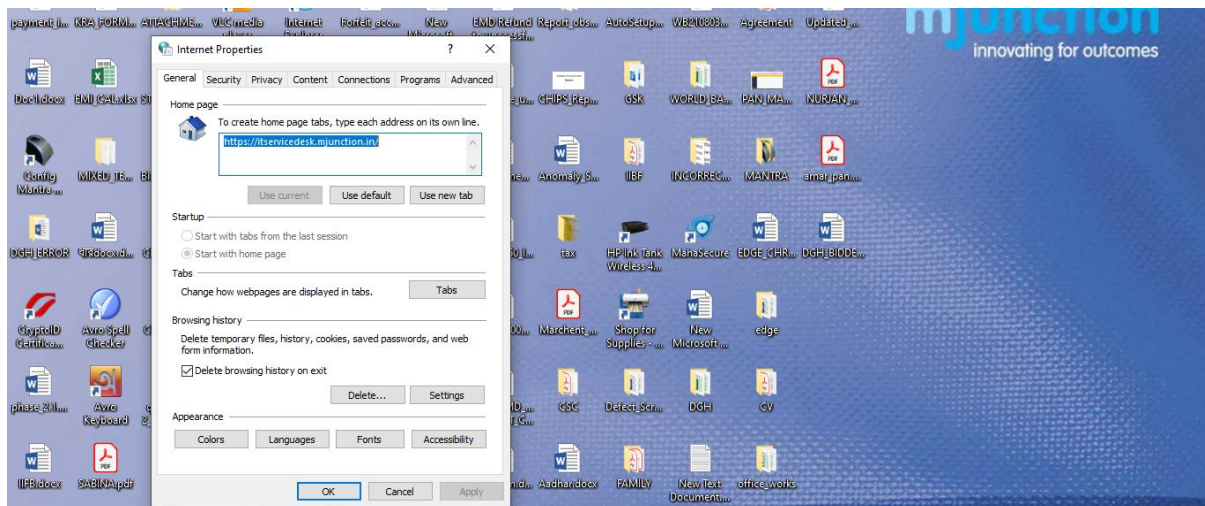


Step 2:

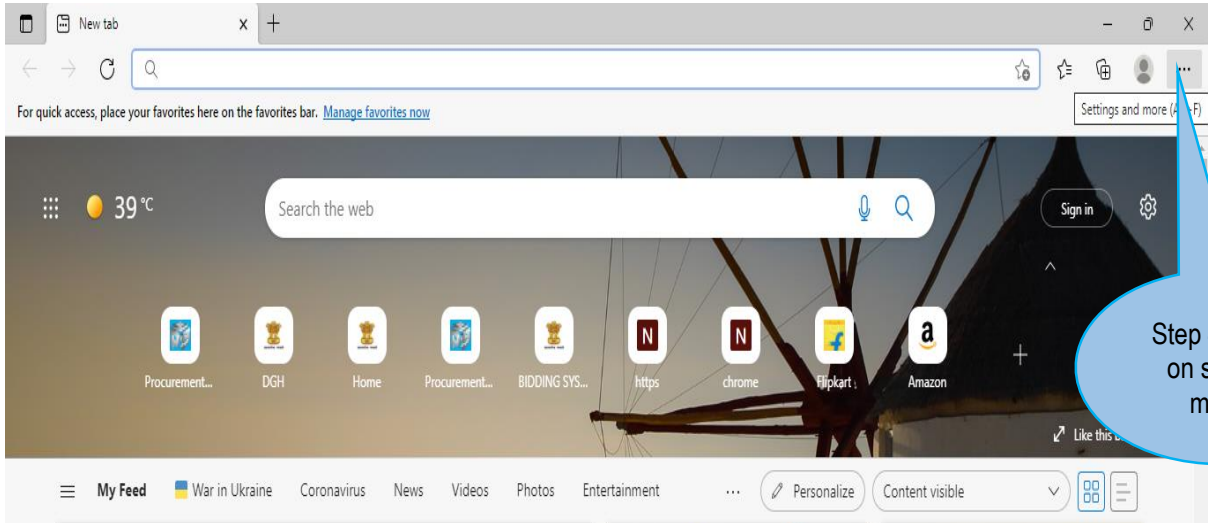
Add the application URL to the Trusted Site List (Security> Trusted Sites)

Set the IE security levels as below (Security >Internet>Custom level):

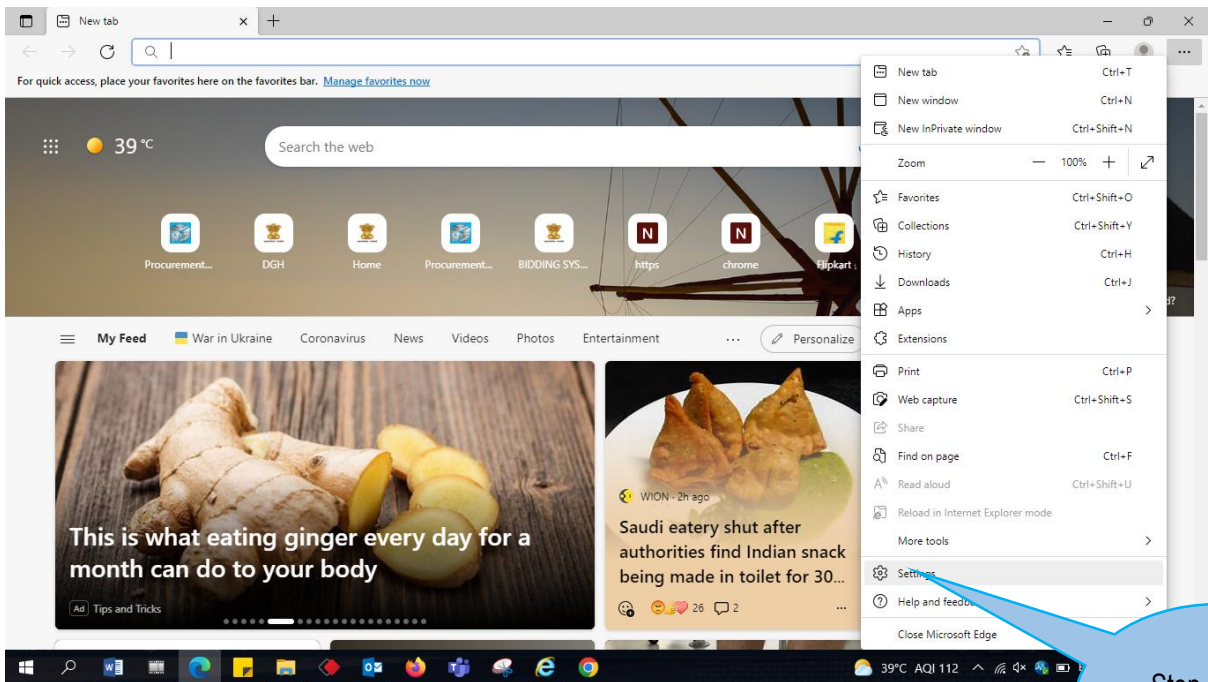
- ✓Internet: Medium-high (default)
- ✓Trusted sites: Medium (default)
- ✓Select Enable or Prompt for the required ActiveX related options under 'Internet' and 'Trusted sites'



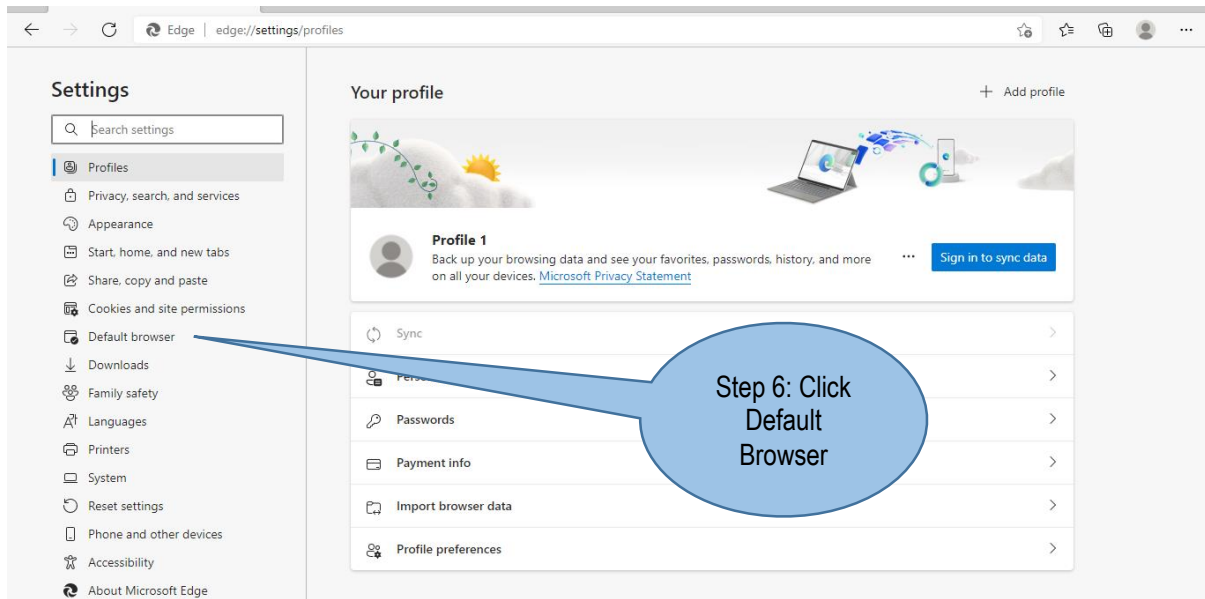
Step 3: Open the Edge Browser

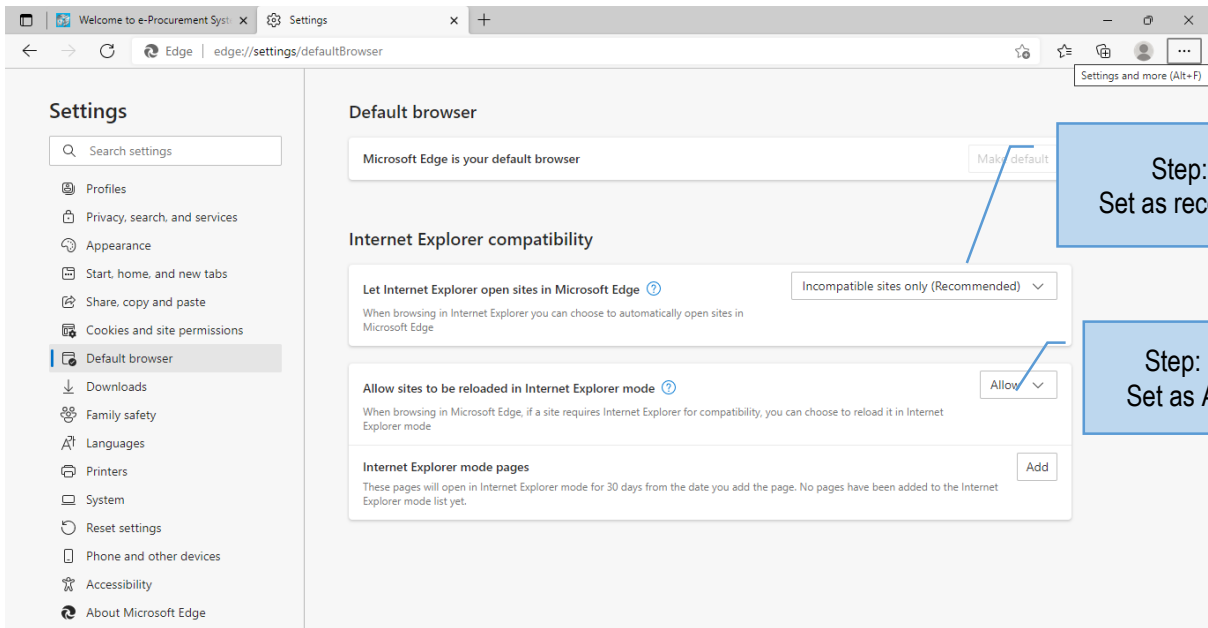


Step 4: Click on setting menu



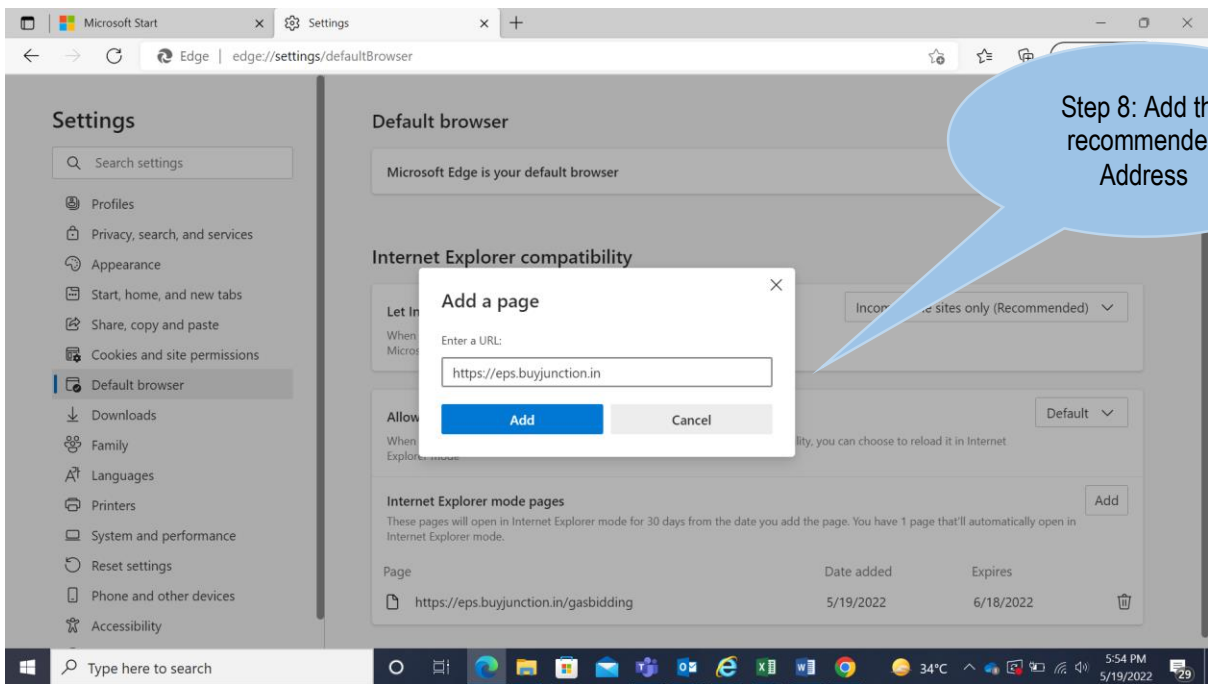
Step 4: Click on setting

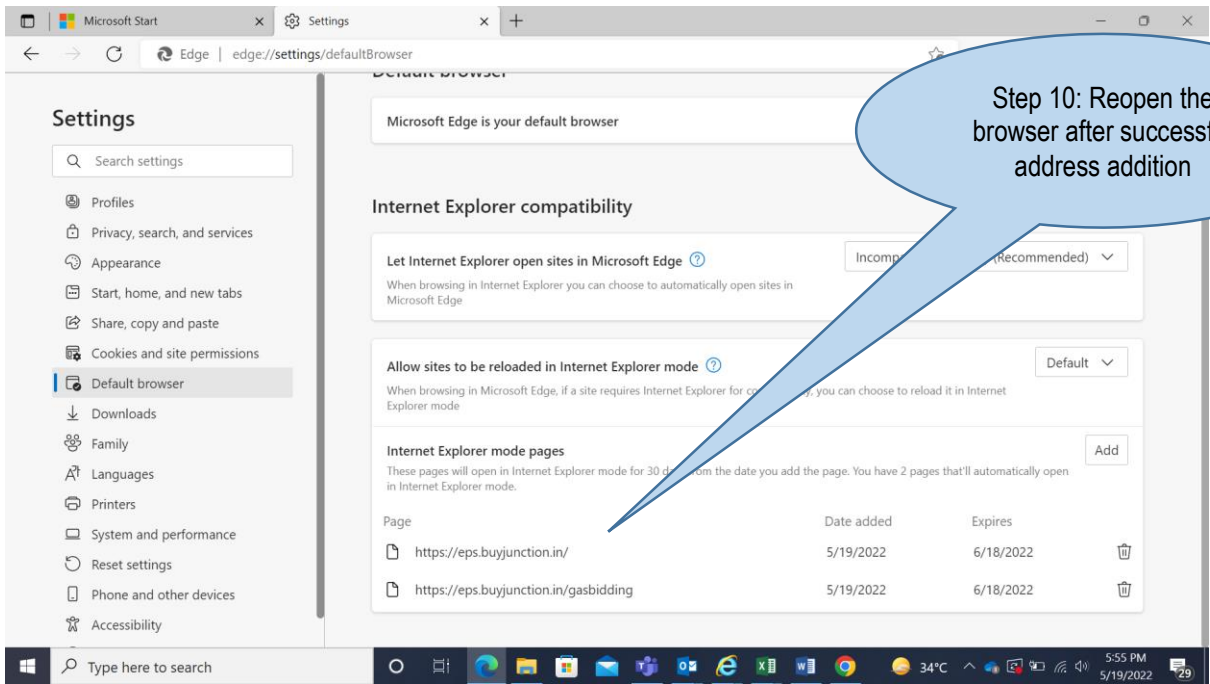




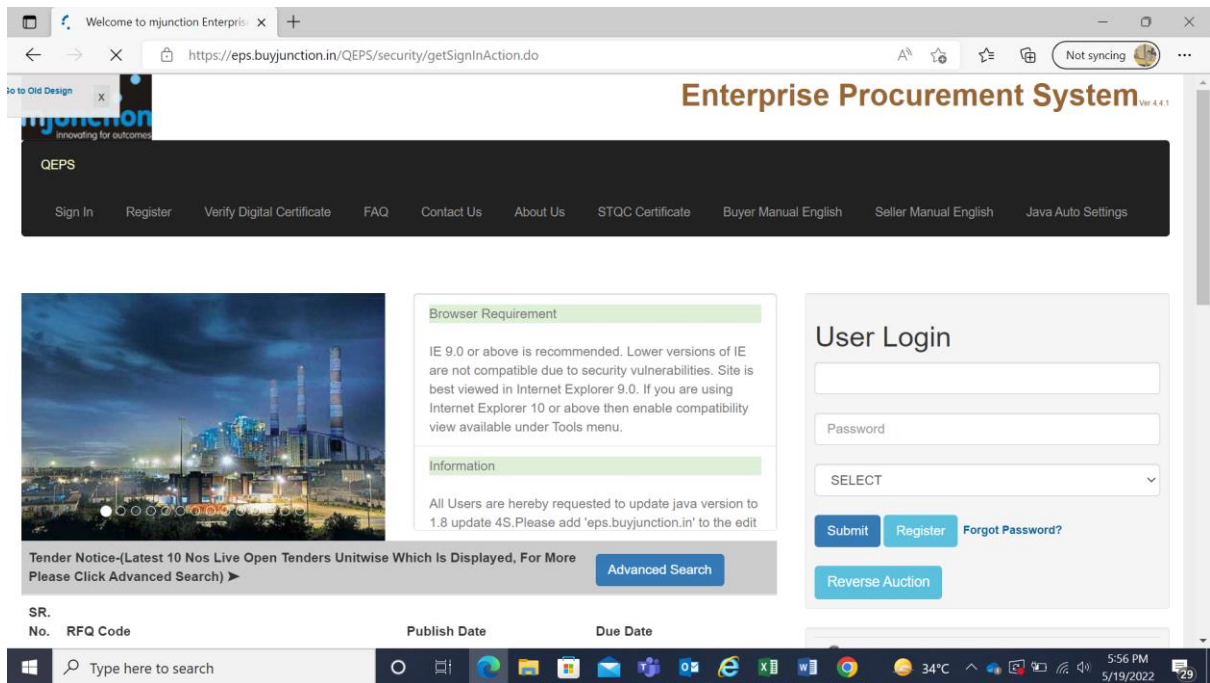
Step: 7.1
Set as recommend

Step: 7.2
Set as Allow





Now the Browser is ready to use



THANK YOU